

BACKYARD COMPOSTING PART 2



**WHAT GOES IN AND WHAT
STAYS OUT**

WHAT GOES IN

-FRUIT SCRAPS

-VEGETABLE SCRAPS

-RINSED EGG SHELLS

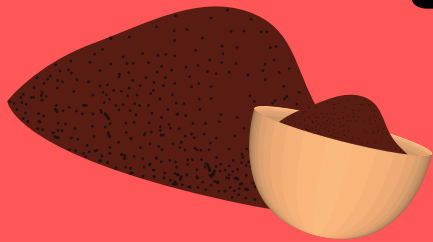
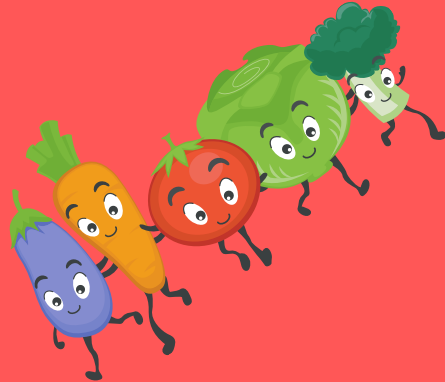
-SHREDDED NEWSPAPER

-COFFEE GROUNDS/TEABAGS

-GARDEN DEBRIS

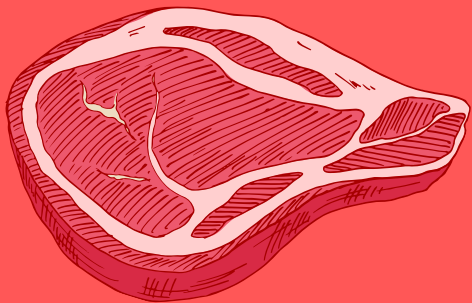
-LEAVES/GRASS CLIPPINGS

-HUMAN OR PET HAIR (SMALL QUANTITIES)



QUICK TIP: DIVERSITY IS KEY! MORE VARIETY IN YOUR COMPOSTABLE MATERIALS THE HEALTHIER YOUR END PRODUCT WILL BE.

WHAT STAYS OUT



-MEAT OR BONES

-DAIRY PRODUCTS

-BREAD



-COOKED FOOD

-WEEDS GONE TO SEED

-CAT AND DOG FECES



-DISEASED PLANTS

-WEEDS WITH RHIZOMES

